

How to Get to Galion:

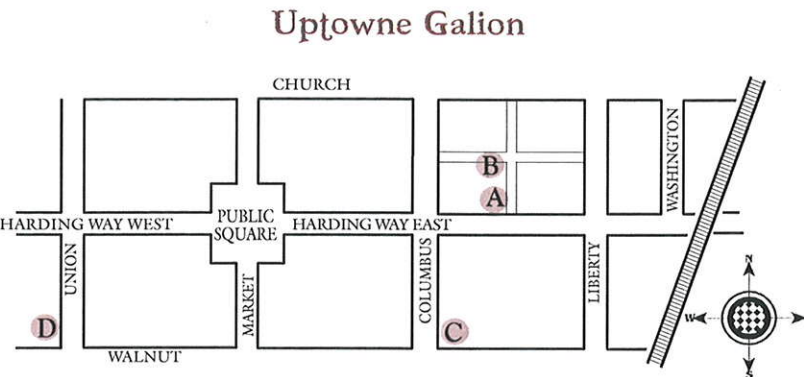
Coming From the West on U.S. Rt 30

Exit at St. Rt. 598. Turn right or south. (This becomes Portland Way North). Follow to the first major intersection at the gas stations, turn left onto Harding Way West. (This was originally West Main Street, later Lincoln Way, then Harding Way, and was the "Corners" where Galion was first settled).

Proceed east one block past Public Square to either parallel park on Harding Way in front of the Elks Club or turn right onto Columbus Street to the parking at the First Lutheran Church on the left.

The Elks Building is a Brick three story building just past Columbus Street on the north (left).

This photo is to help you find your way...



- A** ELKS BANQUET ROOM
East Door is front entrance.
- B** LIMITED PARKING/WHEELCHAIR ACCESS
Enter Alley off N. Columbus Street between Richard's Lock Shop and Post Office
- C** ALL DAY PARKING at FIRST LUTHERAN CHURCH
Enter Alley off S. Columbus Street.
- D** BROWNELLA COTTAGE
Tours Begin at gate entrance at front porch off S. Union St.

Banquet Room Entrance



Photo by Galionite, Dick Cope

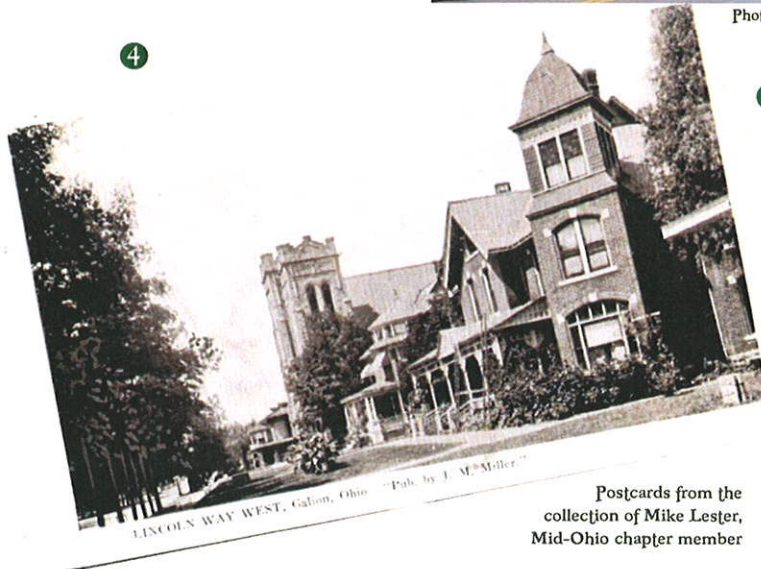
Coming From the East on U.S. Rt 30

Exit at St. Rt. 61. Turn left or south. Turn right (west) at the intersection of St. Rt. 309). Follow to the first stop sign (at Donley Ford). Turn left onto North East Street, and proceed to traffic light at Harding Way East.

Turn right (west). (This was originally West Main Street, later Lincoln Way, then Harding Way. You will be passing through what was once referred to as "Downtown" and as you cross the tracks you will enter "Uptowne."

Proceed across Liberty Street to either parallel park on Harding Way in front of the Elks Club or turn left onto Columbus Street to the parking at the First Lutheran Church on the left.

The Elks Building is a Brick three story building on your right (north) side of street before Columbus Street.



Postcards from the collection of Mike Lester, Mid-Ohio chapter member

POSTCARD LEGEND

- 1** "Looking West from Public Square, Galion, O"...Main Street was renamed Lincoln Way when the highway came through, then was changed to Harding Way when it was moved through Leesville about 1921.
- 2** Looking west from the corner of Columbus Street and Lincoln Way, ca. 1900. (Note the white LH band around the telephone pole).
- 3** Looking east from the corner of Coumbus Street and Lincoln Way, ca. 1920 Note the Elks building with the "Neff's" sign on the side.
- 4** Looking west along Lincoln Way from about where Wendy's is today (at Union Street). The three houses you see here are obviously gone.